

PART OF THE N.E. 1/4
SECTION 5, T.6N.,R.1W., S.L.B.&M.

TAXING UNIT: 07,10,13,450,503,504

IN NORTH OGDEN CITY AND NORTH OGDEN DISTRICT

SCALE 1" = 100'

PREFIX: 11-014

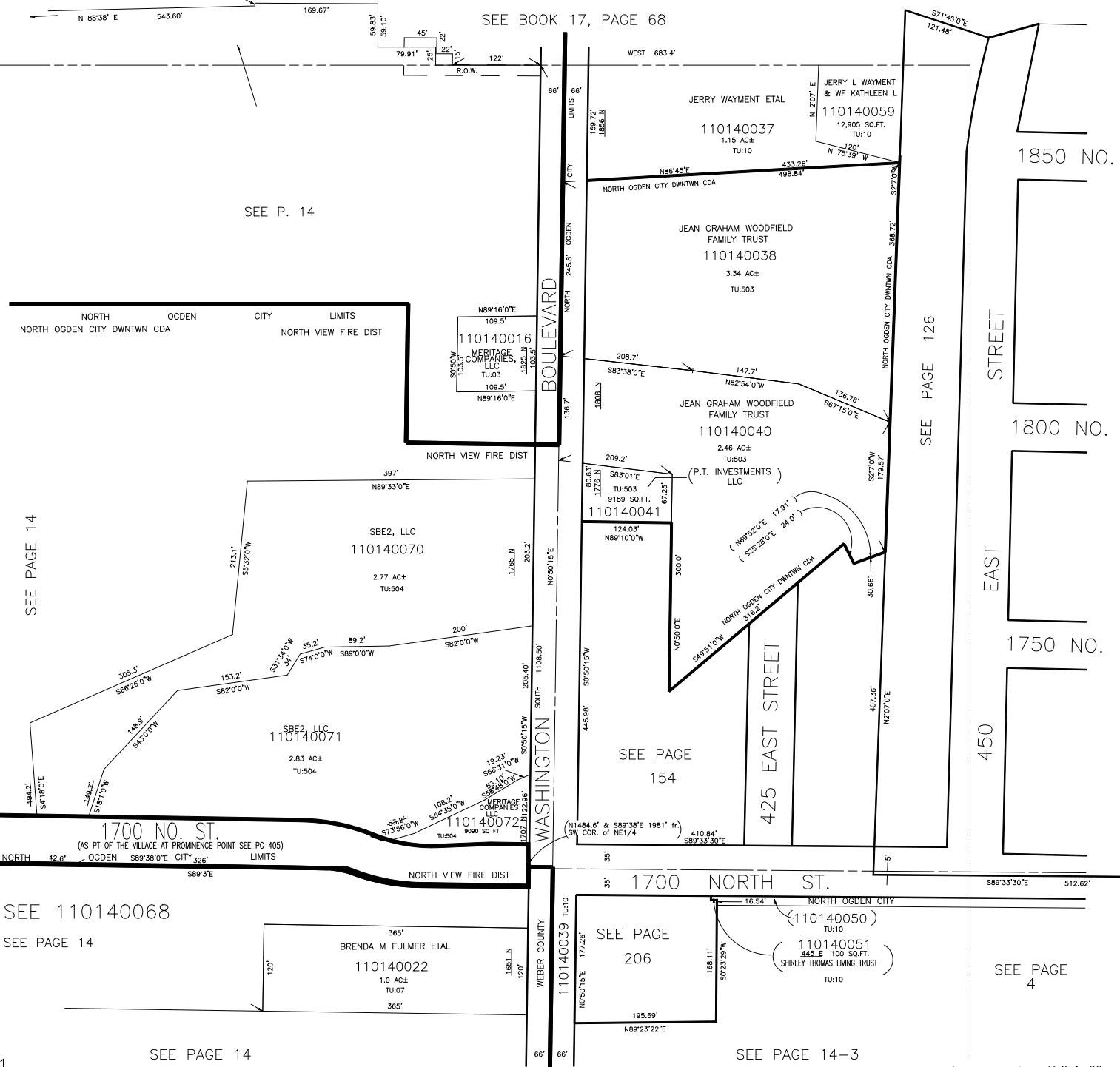
ALSO SEE PAGE 14-3

SEE BOOK 17, PAGE 68

SEE P. 14

SEE PAGE 126

SEE PAGE 14



1850 NO.

1800 NO.

1750 NO.

450

SEE 110140068
SEE PAGE 14

SEE PAGE 206

SEE PAGE 4

SEE PAGE 14

SEE PAGE 14-3